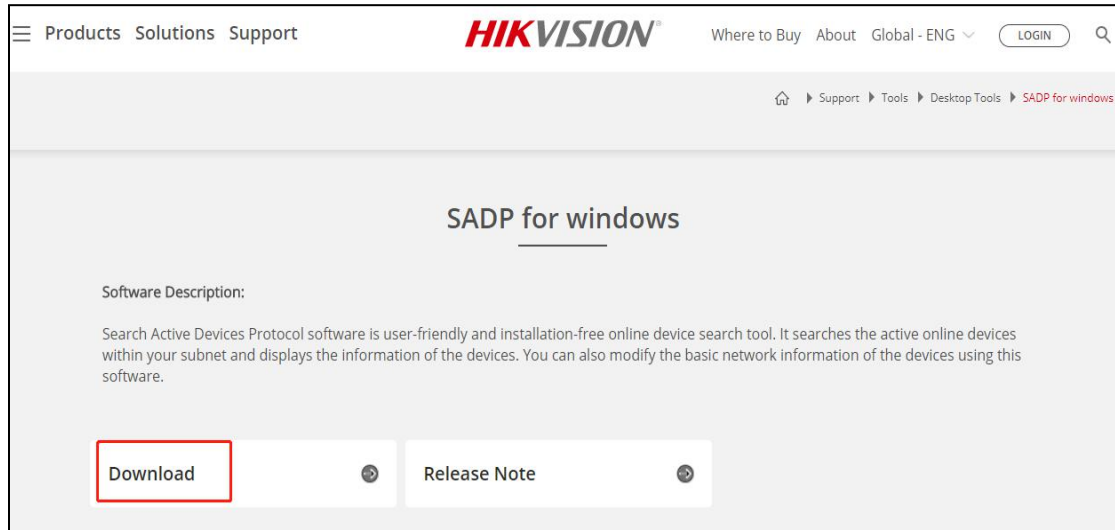


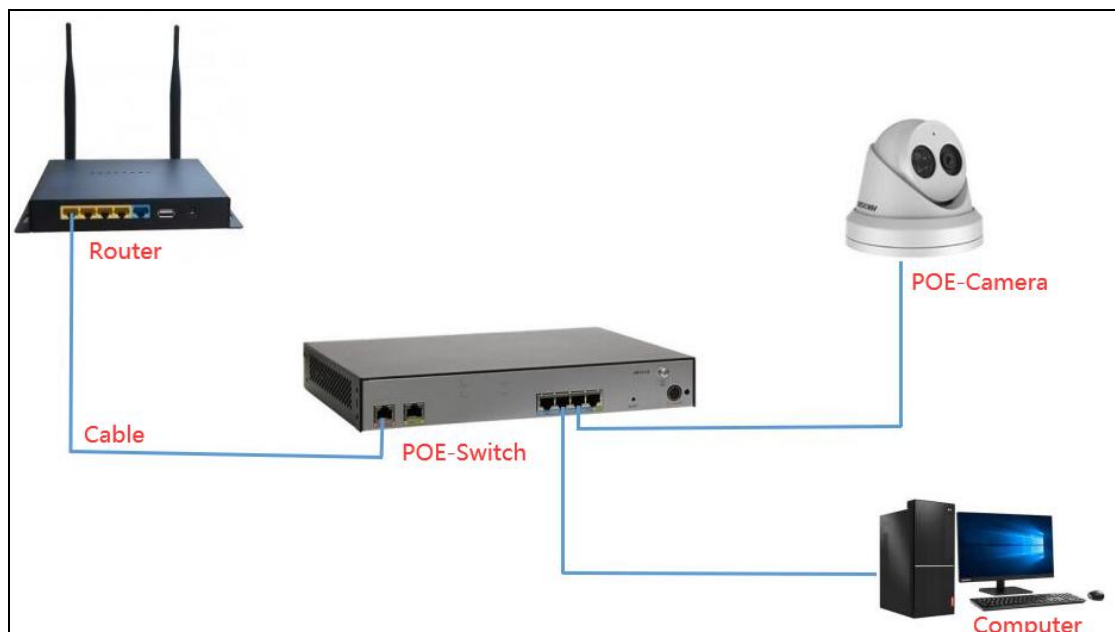
# PG camera connected to Hikvision NVR

**Step 1:** Computer download and install hikvision "SADP" software tool

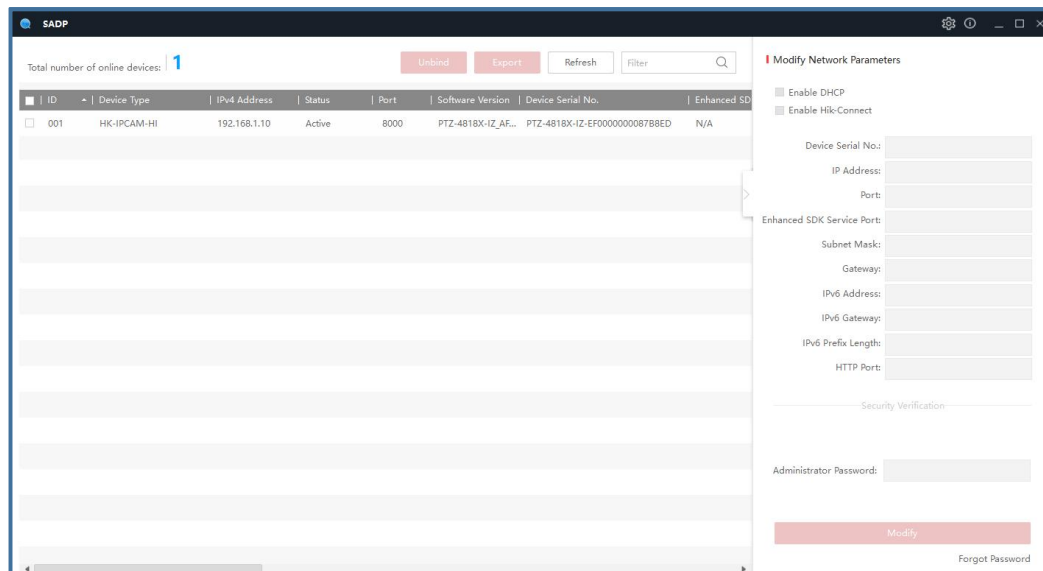


**Download :** <https://www.hikvision.com/en/search/?q=SADP>

**Step 2:** Please keep the computer and camera on **the same LAN**--Please use a network cable to connect, do not use Wifi

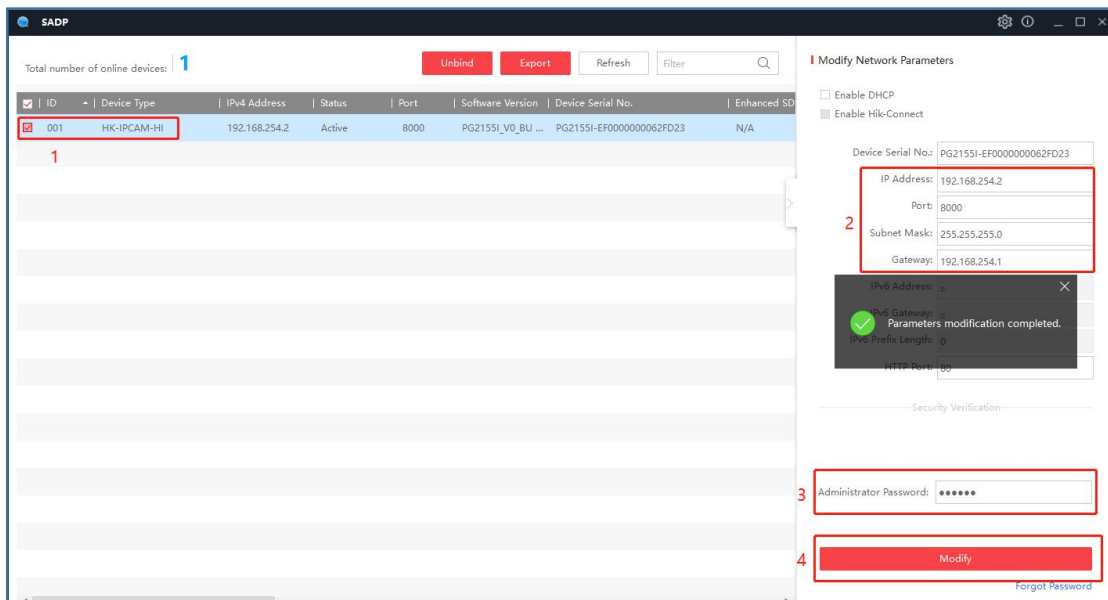


**Step 3:** Query the IP address of the camera through the search tool;

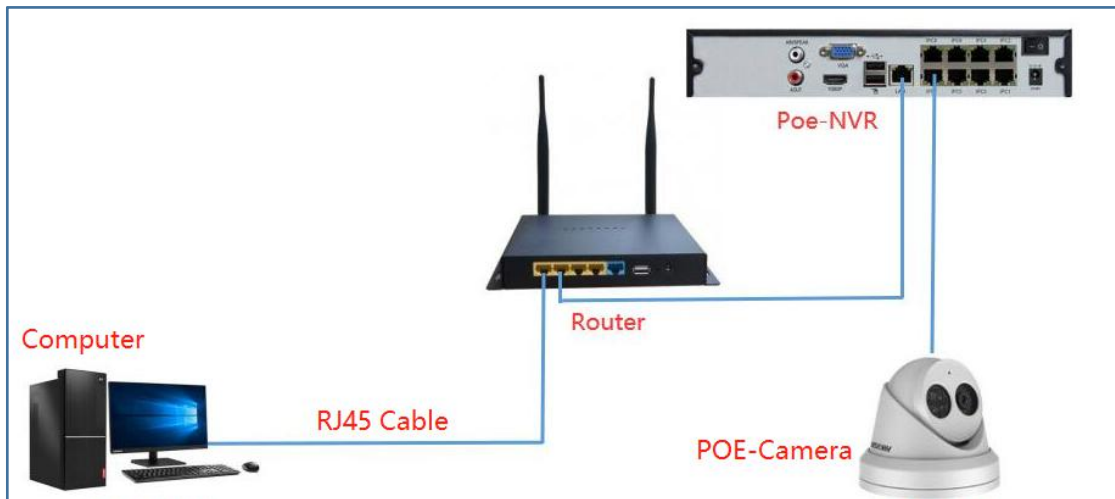


**Step 4:** Modify camera IP address

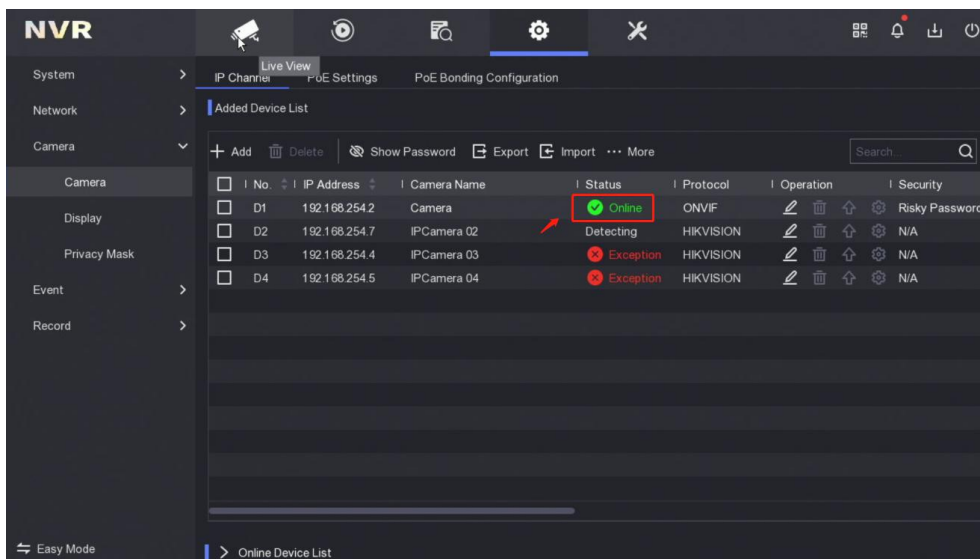
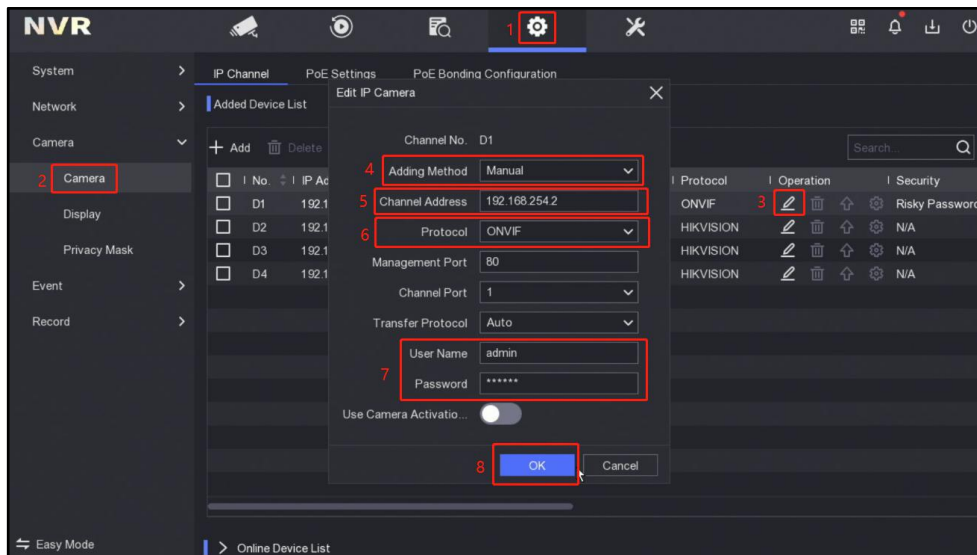
- ① Select camera IP address;
- ② Modify the IP address to be an address between 192.168.254.2---192.168.254.254 and the gateway is set to 192.168.254.1;
- ③ Enter the camera password: 123456;
- ④ Select Modify---Parameters modification completed;



**Step 5:** Connect the camera to the POE port of Hikvision NVR



**Step 6:** Right mouse button--Select Menu --①Configuration--②Camera--③Click Edit--④Choose Manual--⑤Enter 192.168.254.2--⑥Choose ONVIF--⑦Enter IP Camera Password--⑧Click OK



**Step 7:** Added complete --Status Online connection is successful--Live View;

